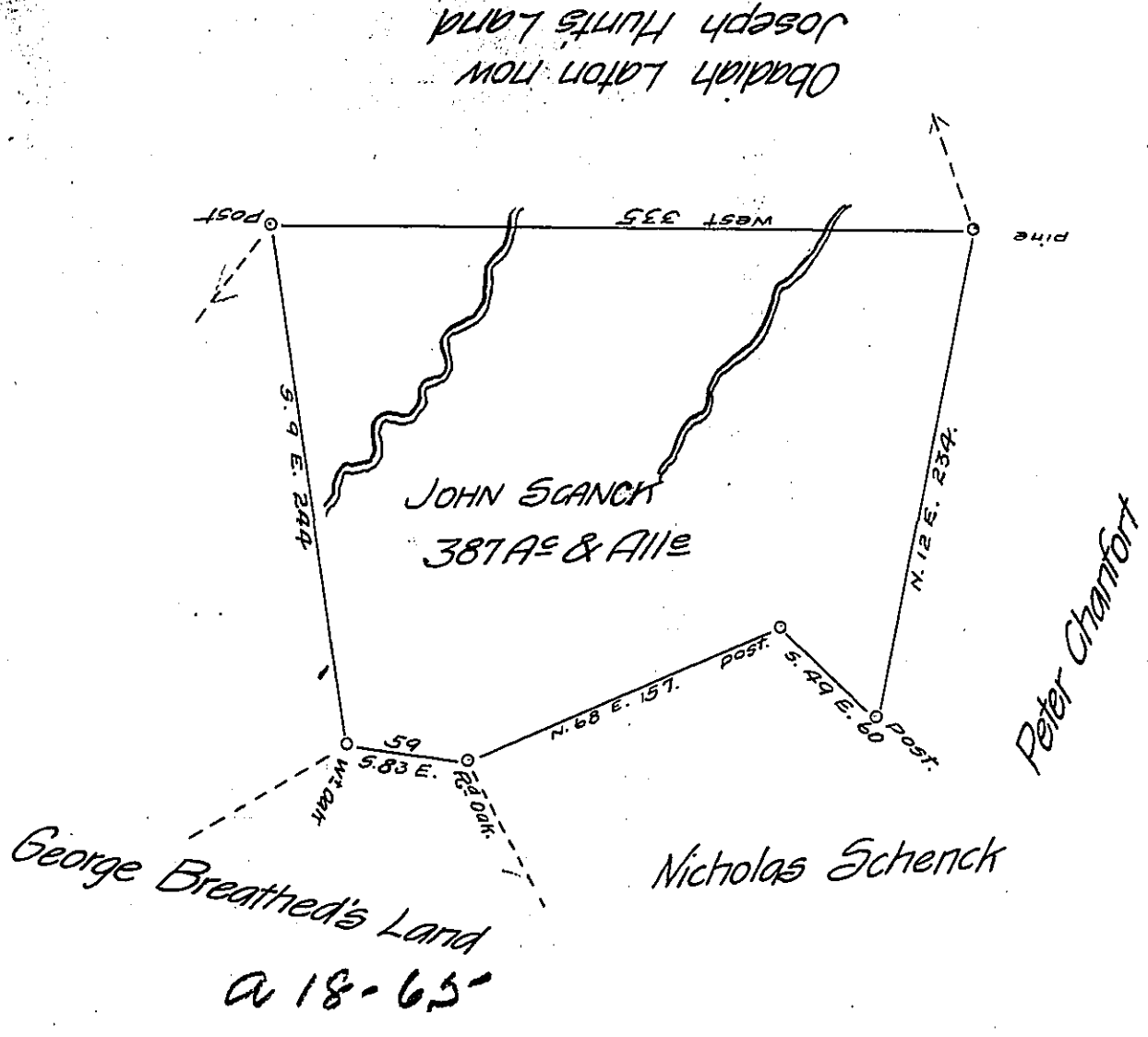


C-92 211



Situated on the Waters of Tonoloway Creek in Bethel Township in the County of Bedford Containing three hundred and eighty seven Acres with the usual allowance of six pr. Cent for Roads &c. Surveyd for John Scanck the 15<sup>th</sup> day of May 1794 in pursuance of a Warrant Dated the 21<sup>st</sup> Day of March 1794

To Daniel Brodhead Esq<sup>r</sup> S.G.                      George Woods Jun<sup>r</sup> D.S

Examined by me Decr. 13<sup>th</sup> 1808

To Samuel Cochran Esq<sup>r</sup>                      John Anderson

Surveyor General                      Deputy Surveyor

IN TESTIMONY that the above is a copy of the original remaining on file in the Department of Internal Affairs of Pennsylvania, made conformably to an Act of Assembly approved the 16th day of February, 1833, I have hereunto set my Hand and caused the Seal of said Department to be affixed at Harrisburg, this twentieth day of May 1907

*Henry Howell*  
Secretary of Internal Affairs.